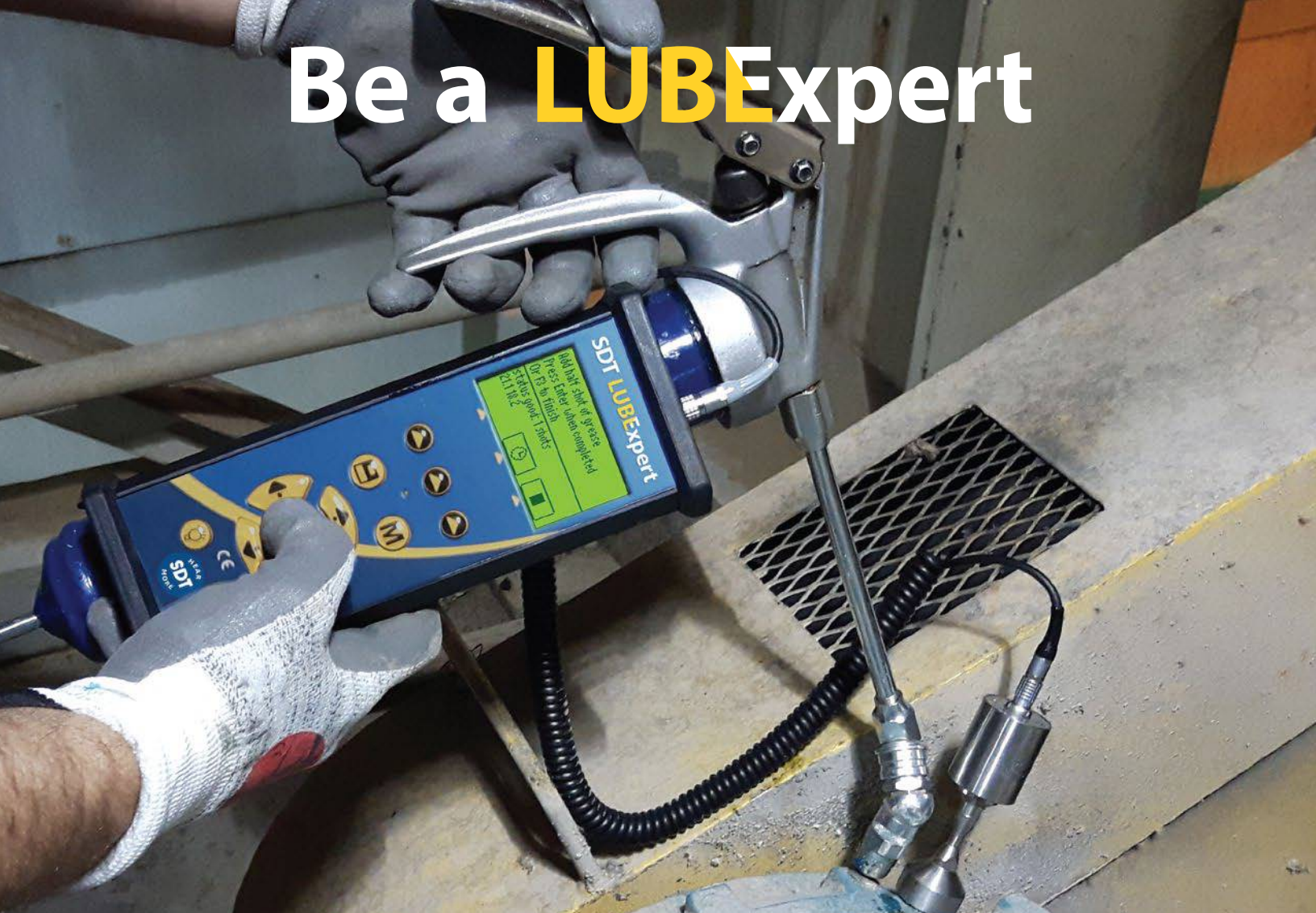


Be a LUBExpert



Poor greasing practices are a leading cause of bearing failure.

Many lube departments re-grease on a wasteful calendar-based schedule. This leads to over and under greased bearings that fail to deliver their engineered value.

LUBExpert tells us when to grease... and when to stop.

Grease reduces friction in bearings. Less friction means longer life. LUBExpert alerts you when friction levels increase, guides you during re-lubrication, and prevents over and under lubrication.

Grease Bearings Right

-  **Right Lubricant**
-  **Right Location**
-  **Right Interval**
-  **Right Quantity**
-  **Right Indicators**



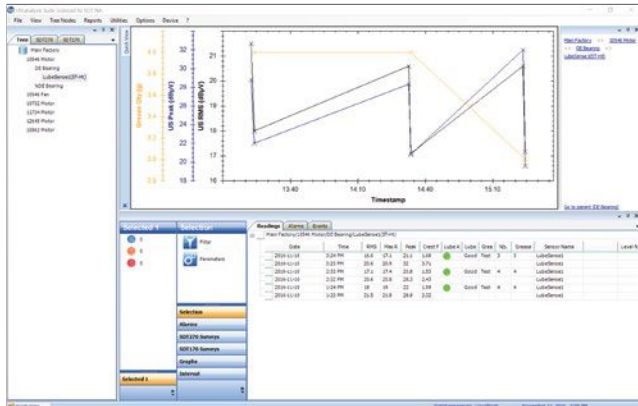
Ultrasound Solutions
1-800-667-5325
sales@sdtthearmore.com

sdtultrasound.com/lubexpert

LUBExpert

A complete ultrasound solution to manage your acoustic lubrication program

Program Management with Ultranalysis Suite

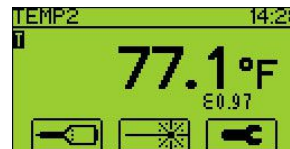


- Create hundreds of databases and surveys
- Track grease types and grease consumption
- Precise diagnosis with SDT's 4 Condition Indicators
- Sort assets as GOOD, BAD or SUSPECT

Specify Grease Type and Quantity per Asset



Record Asset Temperature



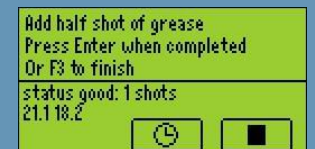
Measure



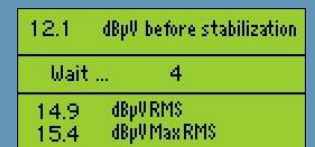
Record



Grease



Analyze



Log



LUBExpert Features

Ultranalysis Suite (UAS) Integration

- 6 Node Trees Define Asset Location
- User Defined Databases and Surveys
- Alarms and Analysis with 4CI
- Before/After Condition Report
- Grease Consumed Report

LUBExpert Onboard Assistant

- Four Condition Indicators
- Temperature Measurement
- Specified Grease Type and Quantity
- Live Guided Re-greasing
- Status Indicator: Good/Bad/Suspect
- Swivel Base Grease Gun Attachment
- Available Upgrade for SDT270SU/DU

LUBExpert is built on the rugged SDT platform and is available through our world-wide network of authorized distributors.



Ultrasound Solutions
1-800-667-5325
sales@sdthearmore.com

sdtultrasound.com/lubexpert